



## LSO On Track Musical Inclusion

### LSO musician videos

Watch these short videos to meet some musicians from the London Symphony Orchestra. Watch the musicians introduce their instrument, explore with us a variety of different sounds, styles and ways of playing, and listen to some fun pieces music. You can join in at any point to sing along, dance, move or respond to the music however you would like.



Video 1: Violin with Clare Duckworth:  
<https://youtu.be/doRyRN9WWXg>



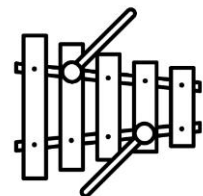
Video 2: Cello with Amanda Truelove:  
<https://youtu.be/y32BgkYA1xl>



Video 3: Trumpet with David Elton:  
<https://youtu.be/FgNoeYRSmpo>

Video 4: Flute with Gareth Davies:  
<https://youtu.be/bxKCOQycpQI>

Video 5: Percussion with Sam Walton:  
<https://youtu.be/ZH9MHAXNEfA>



### Questions

If you have any questions for the LSO musicians, please send these to your teacher, school or music service to pass onto Beth in LSO Discovery. We will try to answer as many of your questions as possible.

### Online activities for Special Schools students, with LSO workshop leader Mark Withers

Online activities written and presented by Mark Withers, leading young people through a step-by-step exploration of the music and associated creative activities. Each video includes instruction from Mark, alongside footage of the London Symphony Orchestra performing at the Barbican.

Each video leads young people through a different type of activity – play along with Ravel's *Bolero*, creative artwork or sensory responses to Debussy's *Prélude à l'après-midi d'un*

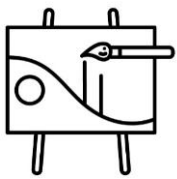


*faune*, and explore and create your own variations using Elgar's Enigma Variations.

You can pause the video at any point or replay sections to complete the activity in your own time.

### Activity 1: Debussy *Prélude à l'après-midi d'un faune*: Visual or Sensory activity

<https://youtu.be/wVawV4GmUyQ>



LSO Animateur Mark Withers leads young people through a step-by-step exploration of Debussy's *Prélude à l'après-midi d'un faune*, using the music to inspire five different pieces of creative artwork or sensory responses.

### Activity 2: Elgar *Enigma Variations*: Explore and Create your own variations

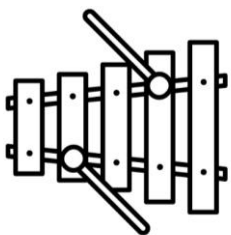
<https://youtu.be/rm6tEQk5iSI>



Join LSO Animateur Mark Withers for this exploration of Elgar's *Enigma Variations*. Find out more about the people and story behind the music, and follow Mark's steps to create your own variations.

### Activity 3: Ravel *Bolero*: Play along

<https://youtu.be/xEq4iCSnvr4>



Explore Ravel's *Bolero* with Mark Withers and have a go at joining in with the London Symphony Orchestra by playing, singing or clapping along. Follow Mark's instructions in the video to do this. You might have an instrument or iPad at home or you could have a go at making your own instrument by using things from around your house.

**All resources are for the private use of the LSO On Track special schools and inclusion community of east London. Please do not share these resource links anywhere publicly.**

For any queries, please contact [Beth.Kershaw@lso.co.uk](mailto:Beth.Kershaw@lso.co.uk)

Online activities written by © copyright Mark Withers 2020  
© All copyrights are held by London Symphony Orchestra 2020